
Samsung Unified Linux Driver

User's Guide

Samsung Electronics, Co., Ltd.

Version 1.3

March, 2015

SAMSUNG ELECTRONICS RESERVES THE RIGHT TO CHANGE PRODUCTS, INFORMATION AND SPECIFICATIONS WITHOUT NOTICE.

Products and specifications discussed herein are for reference purposes only. All information discussed herein is provided as an "AS IS" bases, without warranty of any kind.

This document and all information discussed herein remain the sole and exclusive property of Samsung Electronics, Co., Ltd.. No license of any patent, copyright, mask work, trademark or any other intellectual property right is granted by one party to the other party under this document, by implication, estoppels or otherwise.

Samsung products are not intended for use in life support, critical care, medical, safety equipment, or similar applications where product failure could result in loss of life or personal or physical harm, or any military or defense application, or any governmental procurement to which special terms or provisions may apply.

For updates or additional information about Samsung products, contact your nearest Samsung office.

All brand names, trademarks are registered trademarks belong to their respective owners.

©2014 Samsung Electronics Co., Ltd. All rights reserved.

COPYRIGHT

© 2014 Samsung Electronics Co., Ltd. All rights reserved.

This guide is provided for information purposes only. All information included herein is subject to change without any notice. Samsung Electronics is not responsible for any direct or indirect damages, arising from or related to use of this user's guide.

- Samsung and Samsung logo are trademarks of Samsung Electronics Co., Ltd.
- All other brand, product and company names herein may be the trademarks of their respective owners.

Table of Contents

COPYRIGHT.....	2
INTRODUCTION.....	4
Driver Types.....	4
SUPPORTED ENVIRONMENTS.....	5
Operating Systems.....	5
Pre-conditions.....	5
INSTALLATION.....	6
How To Install ULD.....	6
UNINSTALLATION.....	10
How To Uninstall ULD.....	10
USING "Samsung Unified Linux Driver".....	11
How To Add Your Printer to Your System.....	11
How to Print Your Document.....	15
How to Scan Your Document.....	16
For Xsane Users.....	16
For Simple Scan Users.....	18
How to Install Xsane Program.....	19
How to Install Xsane Program – Trouble Shootings.....	23
For Fedora Users.....	23
For Red Hat Enterprise Linux Users.....	24
SUPPORTED PRINTERS.....	25

INTRODUCTION

The Samsung Unified Linux Driver(ULD) is a unified print and scan driver package that includes all of supported print and scan drivers for Linux. If you install only one ULD, you can access any Samsung printer or scanner which is supported by ULD

Driver Types

There are 2 types(*) of **Samsung Unified Linux Driver** for printer, which are up to PDL type.

Driver Type(Printer)	Description
SPL	Supporting SPL(*) supported models
PS	Supporting PS(*) supported models

(*) Only PS driver is supplied in case of the models which support both SPL and PS

(*) SPL : Samsung Printer Language

(*) PS : PostScript

There is 1 type of **Samsung Unified Linux Driver** for scanner.

Driver Type(Scanner)	Description
SANE(*)	Supporting SSIP(*) supported models

(*) SSIP : Samsung Scan Interface Protocol.

SUPPORTED ENVIRONMENTS

Operating Systems

OS Name	Version
Red Hat Enterprise Linux	5, 6, 7
Fedora	12, 13, 14, 15, 16, 17, 18, 19, 20, 21
openSUSE	11.2, 11.3 ,11.4, 12.1, 12.2, 12.3, 13.1, 13.2
Ubuntu	10.04, 10.10, 11.04, 11.10, 12.04, 12.10, 13.04, 13.10, 14.04, 14.10
SUSE Linux Enterprise Desktop	10, 11, 12
Debian	6, 7
Mint	13, 14, 15, 16, 17

Pre-conditions

Samsung Unified Linux Driver is based on CUPS(*) and SANE(*) systems. It will work properly only in case CUPS and SANE packages are pre-installed on your system. If your system does not get them installed as default, please install them manually on your own.

(*) CUPS : Common Unix Printing System.

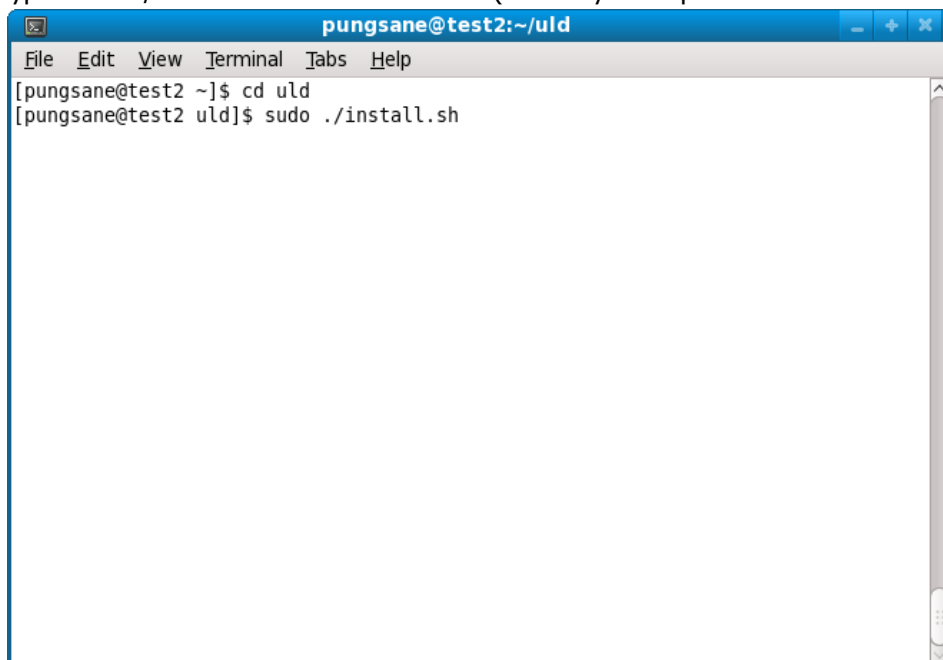
(*) SANE : Scanner Access Now Easy

INSTALLATION

How To Install ULD


NOTE : You don't need to type "sudo" if you are already logged in as root.

1. Open Terminal.
2. Unpack "uld.tar.gz" package.
3. Go to "uld" folder.
4. Type "sudo ./install.sh" to launch installer (You may need password for the current user)

A terminal window titled "pungsane@test2:~/uld" with a menu bar (File, Edit, View, Terminal, Tabs, Help). The terminal shows the following commands and prompts:

```
[pungsane@test2 ~]$ cd uld
[pungsane@test2 uld]$ sudo ./install.sh
```

5. Type "Enter key" to proceed.

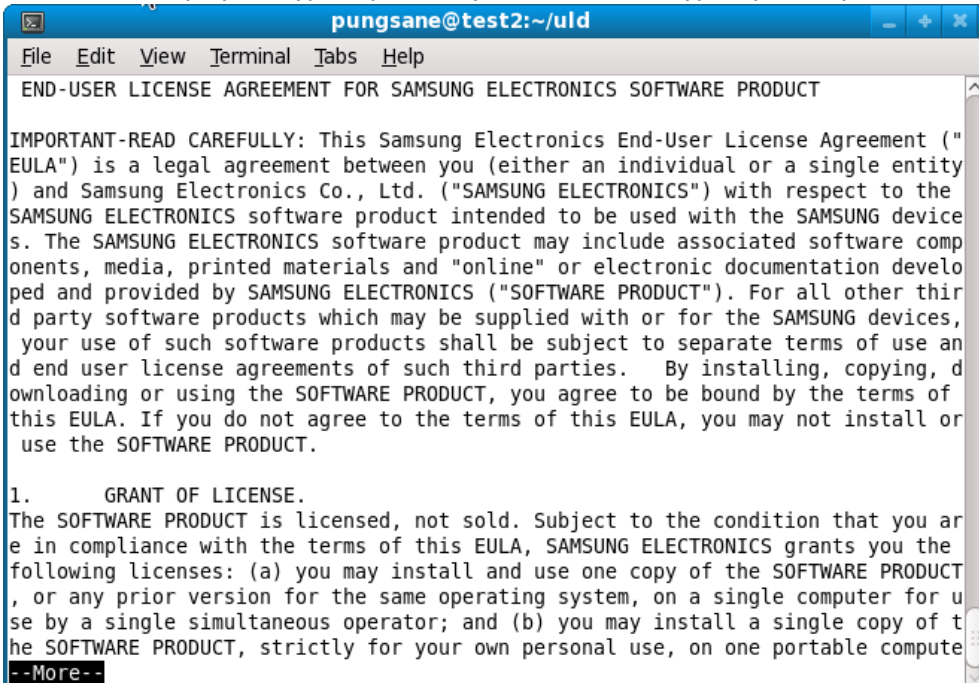


```

pungsane@test2:~/uld
File Edit View Terminal Tabs Help
[pungsane@test2 ~]$ cd uld
[pungsane@test2 uld]$ sudo ./install.sh
**** Running install
**** Press Enter to continue or q and then Enter to quit:

```

6. EULA will be displayed. Type "Space" key to see more or type "q" to skip the rest of EULA pages.



```

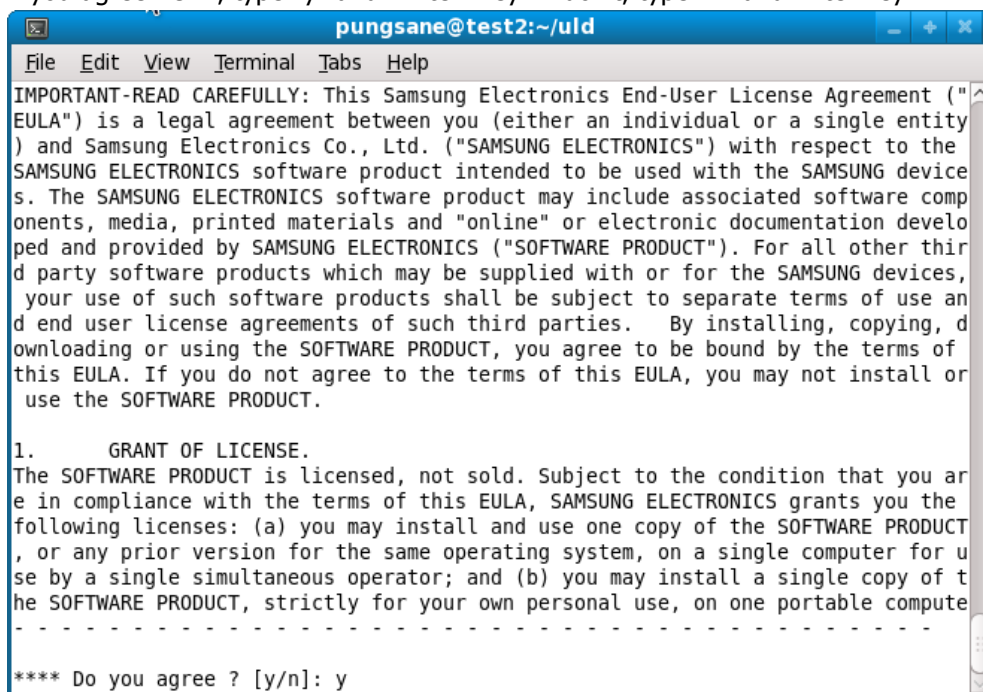
pungsane@test2:~/uld
File Edit View Terminal Tabs Help
END-USER LICENSE AGREEMENT FOR SAMSUNG ELECTRONICS SOFTWARE PRODUCT

IMPORTANT-READ CAREFULLY: This Samsung Electronics End-User License Agreement ("
EULA") is a legal agreement between you (either an individual or a single entity
) and Samsung Electronics Co., Ltd. ("SAMSUNG ELECTRONICS") with respect to the
SAMSUNG ELECTRONICS software product intended to be used with the SAMSUNG device
s. The SAMSUNG ELECTRONICS software product may include associated software compo
nents, media, printed materials and "online" or electronic documentation develop
ed and provided by SAMSUNG ELECTRONICS ("SOFTWARE PRODUCT"). For all other thir
d party software products which may be supplied with or for the SAMSUNG devices,
your use of such software products shall be subject to separate terms of use an
d end user license agreements of such third parties. By installing, copying, d
ownloading or using the SOFTWARE PRODUCT, you agree to be bound by the terms of
this EULA. If you do not agree to the terms of this EULA, you may not install or
use the SOFTWARE PRODUCT.

1. GRANT OF LICENSE.
The SOFTWARE PRODUCT is licensed, not sold. Subject to the condition that you ar
e in compliance with the terms of this EULA, SAMSUNG ELECTRONICS grants you the
following licenses: (a) you may install and use one copy of the SOFTWARE PRODUCT
, or any prior version for the same operating system, on a single computer for u
se by a single simultaneous operator; and (b) you may install a single copy of t
he SOFTWARE PRODUCT, strictly for your own personal use, on one portable compute
--More--

```

7. If you agree EULA, type "y" and "Enter" key. If don't, type "n" and Enter key.



```

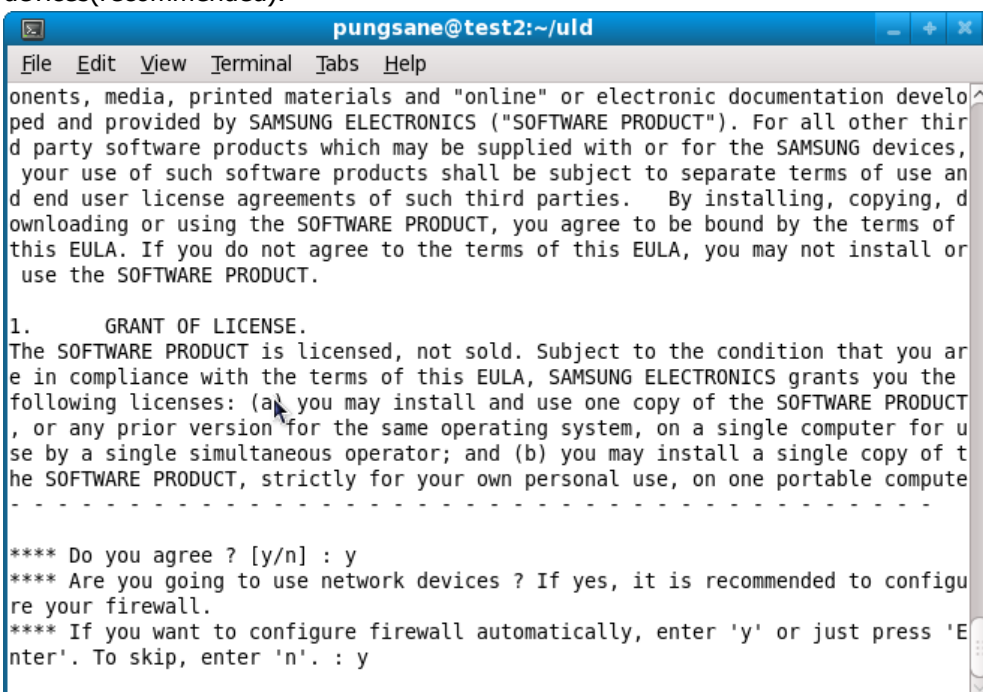
pungsane@test2:~/uld
File Edit View Terminal Tabs Help
IMPORTANT-READ CAREFULLY: This Samsung Electronics End-User License Agreement ("
EULA") is a legal agreement between you (either an individual or a single entity
) and Samsung Electronics Co., Ltd. ("SAMSUNG ELECTRONICS") with respect to the
SAMSUNG ELECTRONICS software product intended to be used with the SAMSUNG device
s. The SAMSUNG ELECTRONICS software product may include associated software comp
onents, media, printed materials and "online" or electronic documentation develo
ped and provided by SAMSUNG ELECTRONICS ("SOFTWARE PRODUCT"). For all other thir
d party software products which may be supplied with or for the SAMSUNG devices,
your use of such software products shall be subject to separate terms of use an
d end user license agreements of such third parties. By installing, copying, d
ownloading or using the SOFTWARE PRODUCT, you agree to be bound by the terms of
this EULA. If you do not agree to the terms of this EULA, you may not install or
use the SOFTWARE PRODUCT.

1. GRANT OF LICENSE.
The SOFTWARE PRODUCT is licensed, not sold. Subject to the condition that you ar
e in compliance with the terms of this EULA, SAMSUNG ELECTRONICS grants you the
following licenses: (a) you may install and use one copy of the SOFTWARE PRODUCT
, or any prior version for the same operating system, on a single computer for u
se by a single simultaneous operator; and (b) you may install a single copy of t
he SOFTWARE PRODUCT, strictly for your own personal use, on one portable compute
- - - - -

**** Do you agree ? [y/n]: y

```

8. Question about Firewall configuration will be displayed. Type "y" and "Enter" key for network devices(recommended).



```

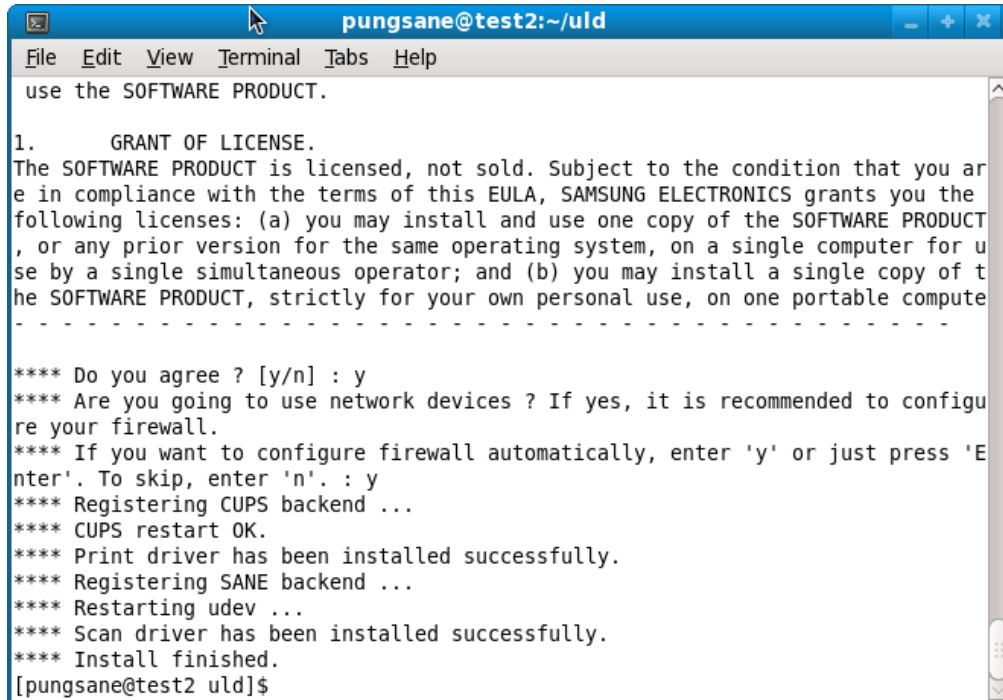
pungsane@test2:~/uld
File Edit View Terminal Tabs Help
onents, media, printed materials and "online" or electronic documentation develo
ped and provided by SAMSUNG ELECTRONICS ("SOFTWARE PRODUCT"). For all other thir
d party software products which may be supplied with or for the SAMSUNG devices,
your use of such software products shall be subject to separate terms of use an
d end user license agreements of such third parties. By installing, copying, d
ownloading or using the SOFTWARE PRODUCT, you agree to be bound by the terms of
this EULA. If you do not agree to the terms of this EULA, you may not install or
use the SOFTWARE PRODUCT.

1. GRANT OF LICENSE.
The SOFTWARE PRODUCT is licensed, not sold. Subject to the condition that you ar
e in compliance with the terms of this EULA, SAMSUNG ELECTRONICS grants you the
following licenses: (a) you may install and use one copy of the SOFTWARE PRODUCT
, or any prior version for the same operating system, on a single computer for u
se by a single simultaneous operator; and (b) you may install a single copy of t
he SOFTWARE PRODUCT, strictly for your own personal use, on one portable compute
- - - - -

**** Do you agree ? [y/n] : y
**** Are you going to use network devices ? If yes, it is recommended to configu
re your firewall.
**** If you want to configure firewall automatically, enter 'y' or just press 'E
nter'. To skip, enter 'n'. : y

```

9. Install finished.

A terminal window titled 'pungsane@test2:~/uld' with a menu bar containing 'File', 'Edit', 'View', 'Terminal', 'Tabs', and 'Help'. The terminal output shows the end of a software installation. It starts with 'use the SOFTWARE PRODUCT.' followed by a license section titled '1. GRANT OF LICENSE.' which states that the software is licensed, not sold, and provides terms of use. Below the license, there are several status messages: '**** Do you agree ? [y/n] : y', '**** Are you going to use network devices ? If yes, it is recommended to configure your firewall.', '**** If you want to configure firewall automatically, enter 'y' or just press 'Enter'. To skip, enter 'n'. : y', '**** Registering CUPS backend ...', '**** CUPS restart OK.', '**** Print driver has been installed successfully.', '**** Registering SANE backend ...', '**** Restarting udev ...', '**** Scan driver has been installed successfully.', and '**** Install finished.'. The prompt '[pungsane@test2 uld]\$' is visible at the bottom.

```
pungsane@test2:~/uld
File Edit View Terminal Tabs Help
use the SOFTWARE PRODUCT.

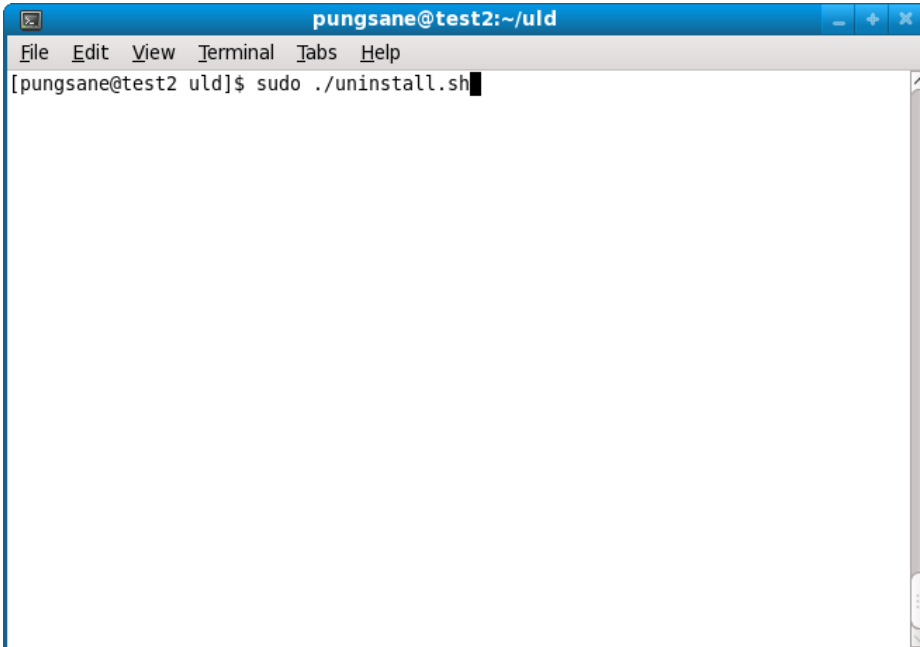
1. GRANT OF LICENSE.
The SOFTWARE PRODUCT is licensed, not sold. Subject to the condition that you are
in compliance with the terms of this EULA, SAMSUNG ELECTRONICS grants you the
following licenses: (a) you may install and use one copy of the SOFTWARE PRODUCT
, or any prior version for the same operating system, on a single computer for use
by a single simultaneous operator; and (b) you may install a single copy of the
SOFTWARE PRODUCT, strictly for your own personal use, on one portable compute
-----

**** Do you agree ? [y/n] : y
**** Are you going to use network devices ? If yes, it is recommended to configure
your firewall.
**** If you want to configure firewall automatically, enter 'y' or just press 'Enter'.
To skip, enter 'n'. : y
**** Registering CUPS backend ...
**** CUPS restart OK.
**** Print driver has been installed successfully.
**** Registering SANE backend ...
**** Restarting udev ...
**** Scan driver has been installed successfully.
**** Install finished.
[pungsane@test2 uld]$
```

UNINSTALLATION

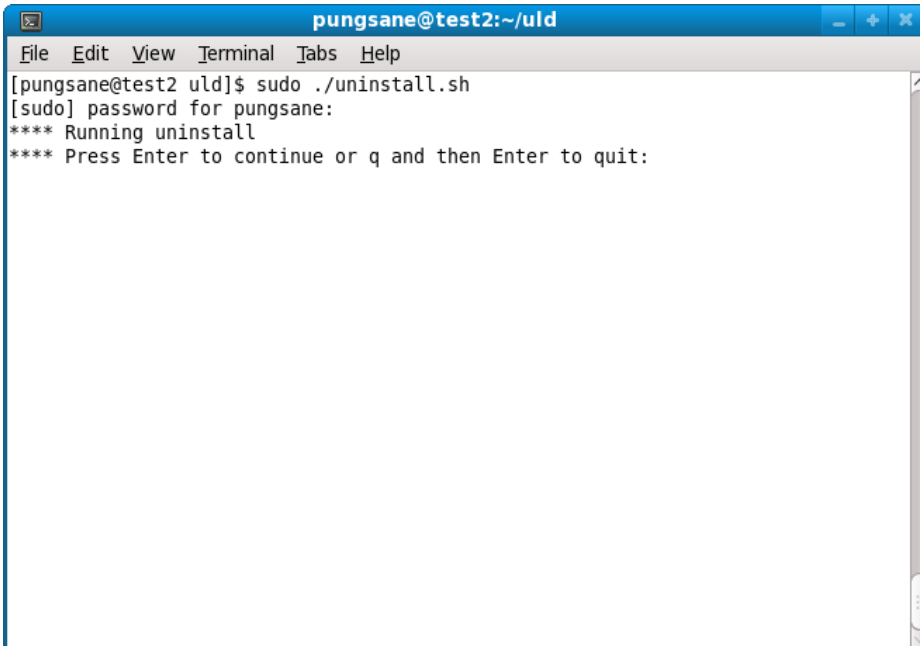
How To Uninstall ULD

1. Open Terminal.
2. Move to "uld" folder and type "sudo ./uninstall.sh" to launch uninstaller installer (You may need password for the current user).



```
pungsane@test2:~/uld
File Edit View Terminal Tabs Help
[pungsane@test2 uld]$ sudo ./uninstall.sh
```

3. Type "Enter" key to proceed.



```
pungsane@test2:~/uld
File Edit View Terminal Tabs Help
[pungsane@test2 uld]$ sudo ./uninstall.sh
[sudo] password for pungsane:
**** Running uninstall
**** Press Enter to continue or q and then Enter to quit:
```

4. Uninstall finished.

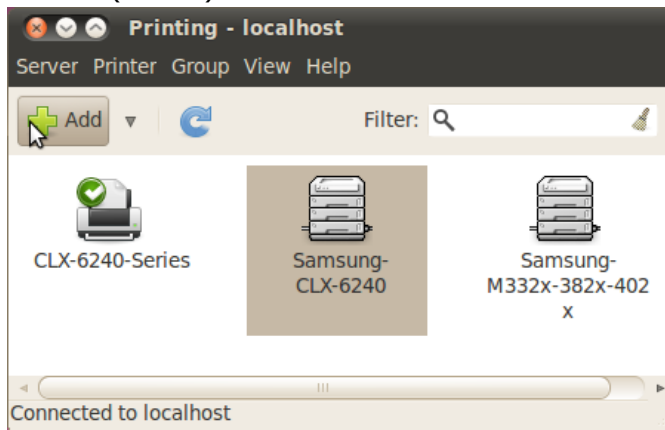
USING “Samsung Unified Linux Driver”

NOTE : The explanations below are regarding general steps and they may be different according to your Linux distribution’s kind or version.

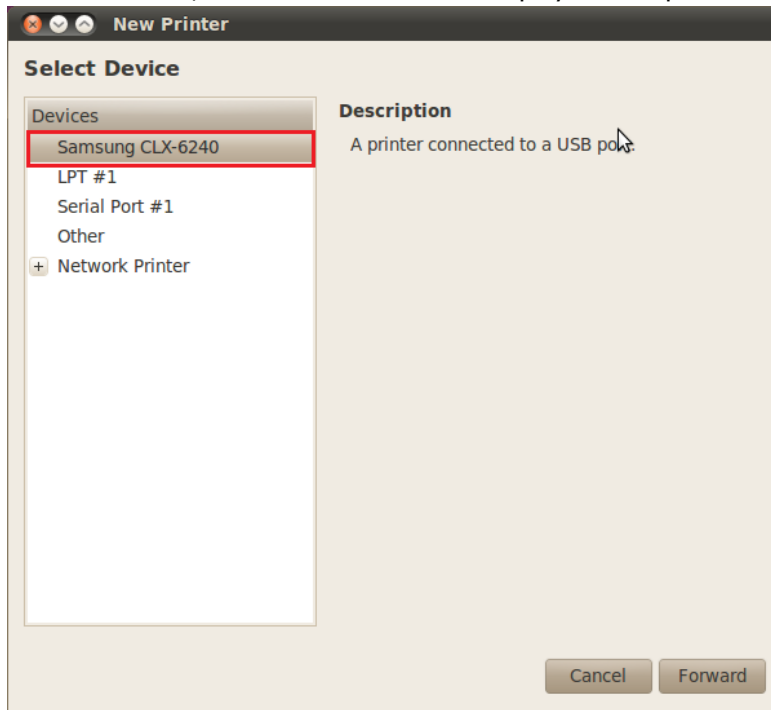
How To Add Your Printer to Your System

NOTE : You can also add a printer by using CUPS Web UI instead of the method below. Launch web browser such as Firefox and go to <http://localhost:631>

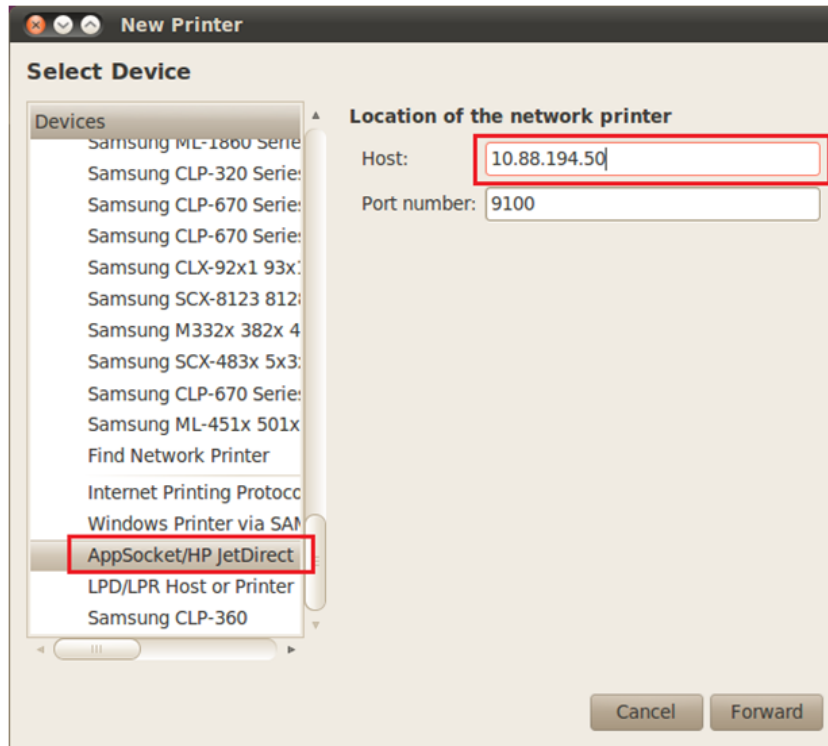
1. Launch system’s printing utility (go to System > Administration > Printing or execute the command “system-config-printer”).
2. Click Add(or New) button.



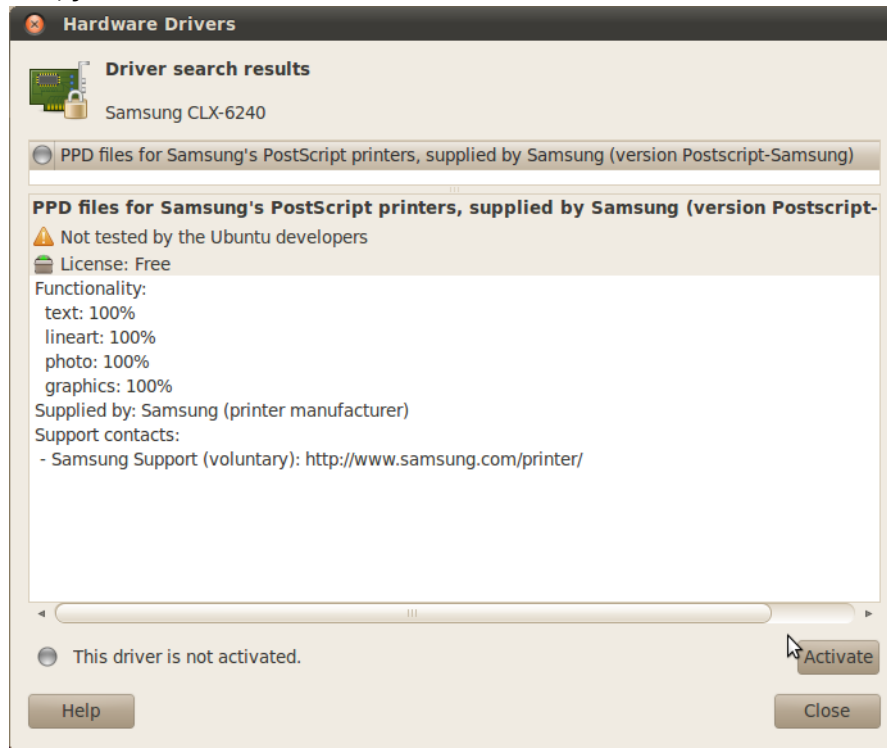
3. For USB devices, it’s model name will be displayed on top. Select it and click Forward..



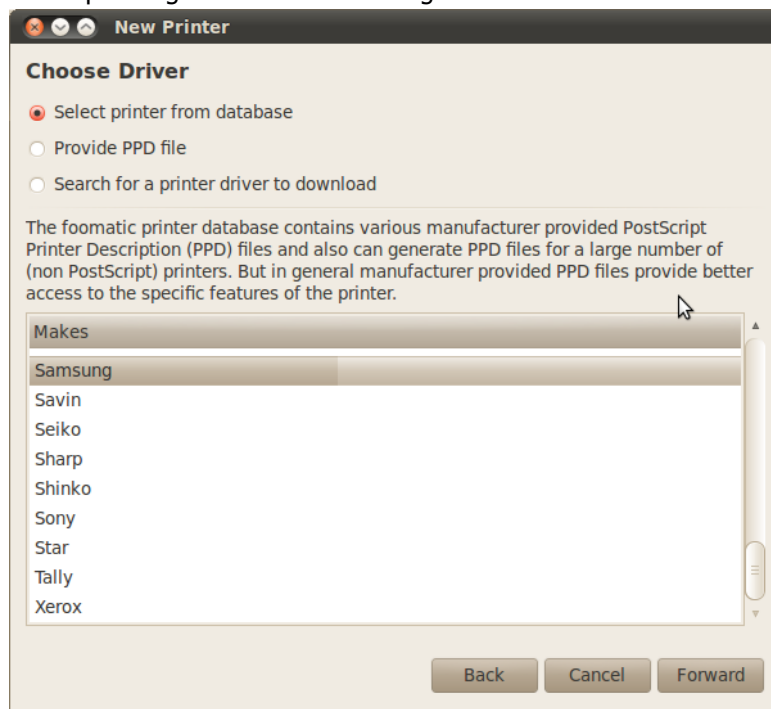
4. For network devices, select AppSocket/HP JetDirect under Network Printer menu and type ip address into Host field.



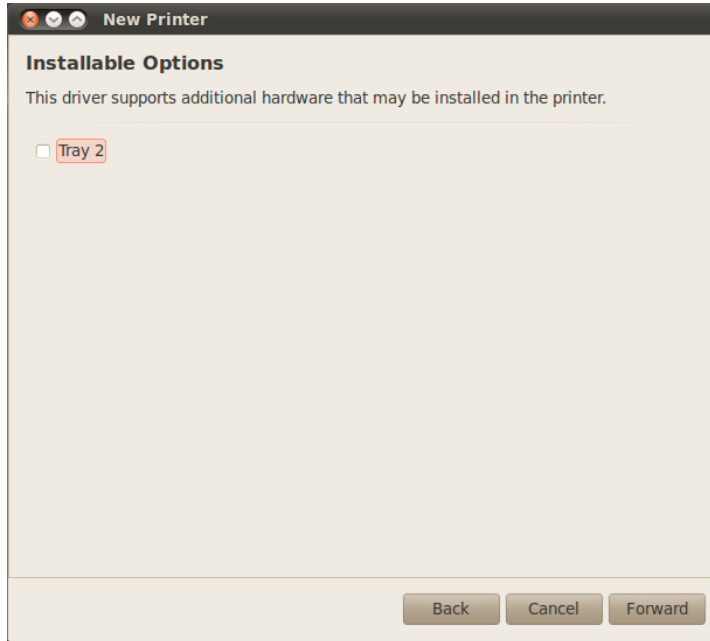
5. In case of some Linux distributions (such as Ubuntu), it will discover available driver automatically from OpenPrinting web site if the corresponding driver was registered on the web site. In this case, just click Activate button and Close.



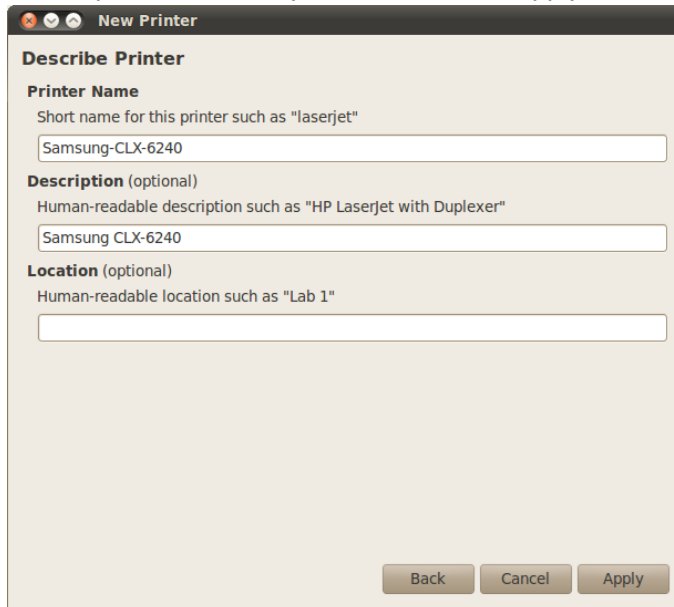
6. In case it does not discover the installed driver automatically, so you may need to select the corresponding driver from Samsung database.



- Set the installable options(such as Tray2, Finisher) according to current device's settings(it may not be displayed according to driver in case installable options are not supported)

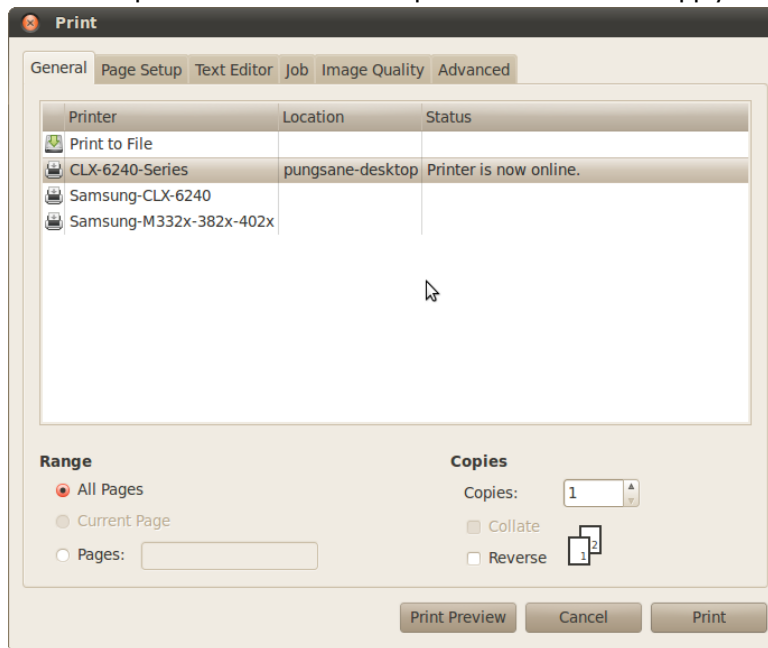


- Set the printer name as you want and click Apply button.



How to Print Your Document

1. Launch an application and open a test file.
2. Click Print button.
3. Select the printer to test and set options in each tab to apply.

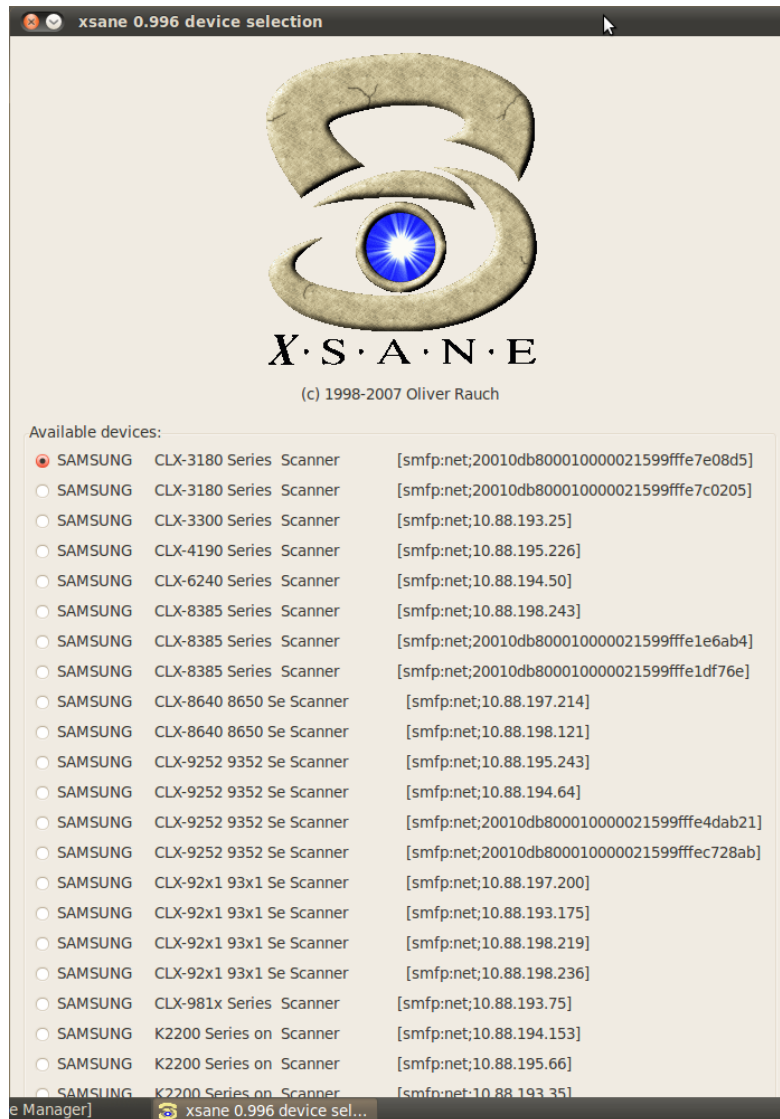


4. Click Print button.

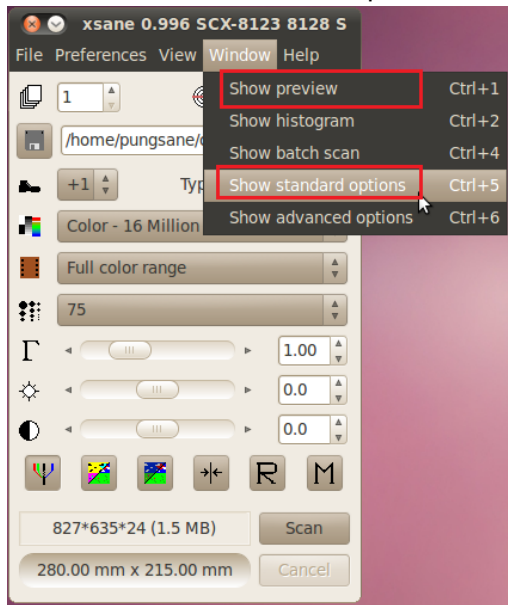
How to Scan Your Document

For Xsane Users

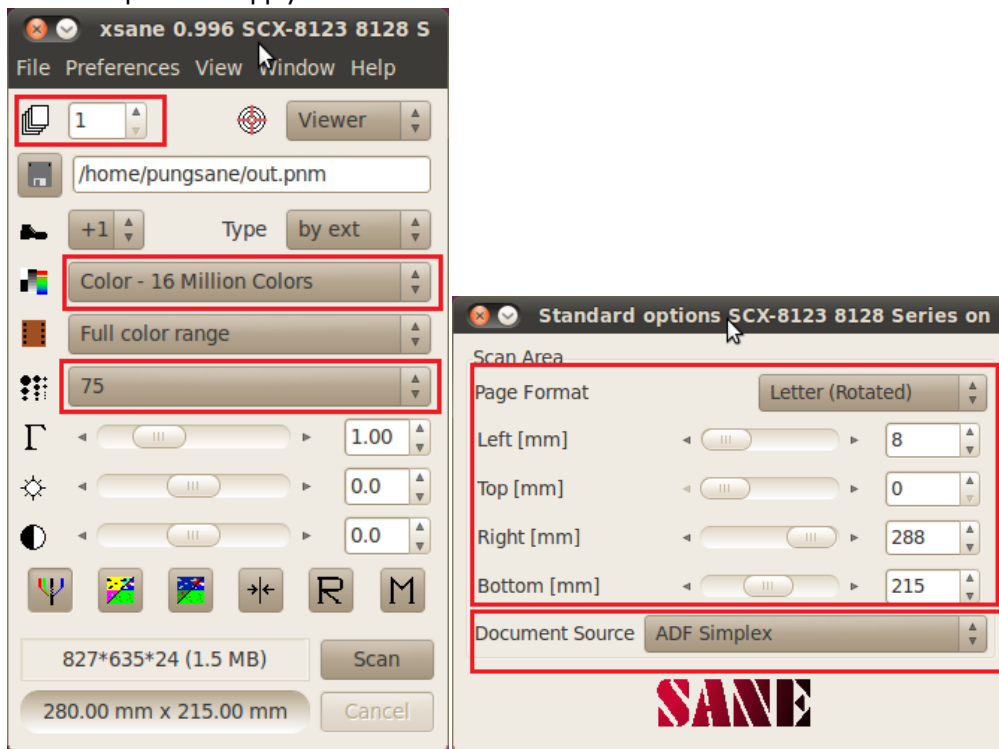
1. Launch Xsane program(execute the command "xsane" in Terminal program. In case it's not installed by default, please install it by referring to the [How to Install Xsane Program](#) section. Or you can use "Simple Scan" program installed as default on most of recent distributions).
2. Select a device to test.



3. Enable Preview and standard options window.



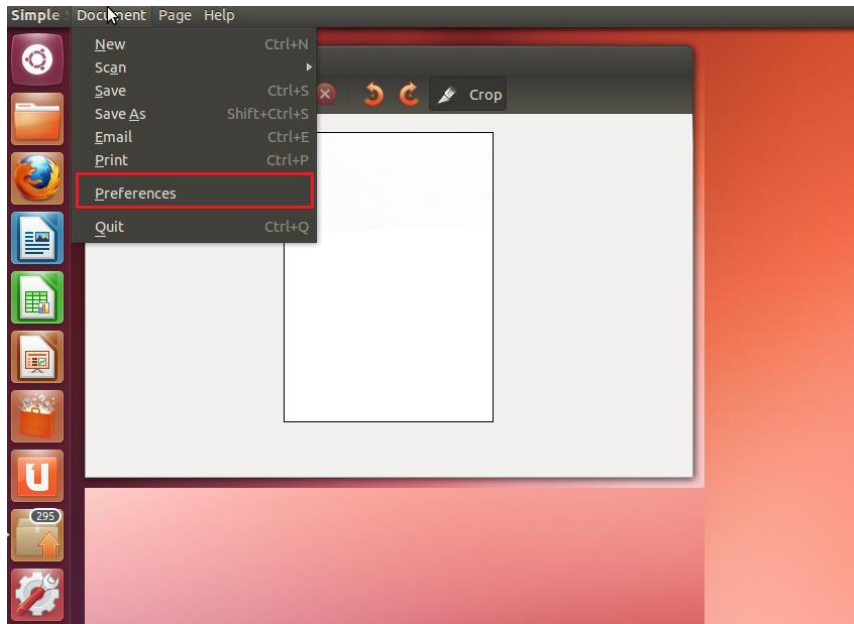
4. Set scan options to apply



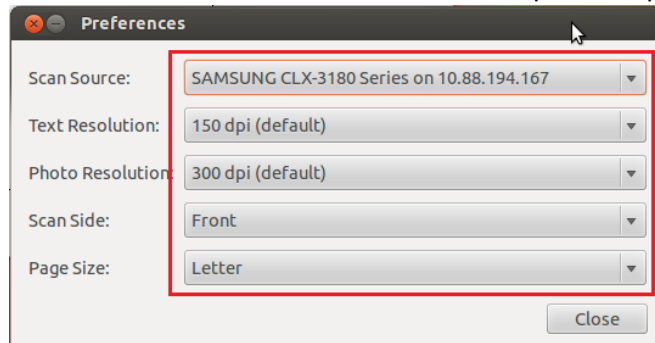
5. Click Scan button.

For Simple Scan Users

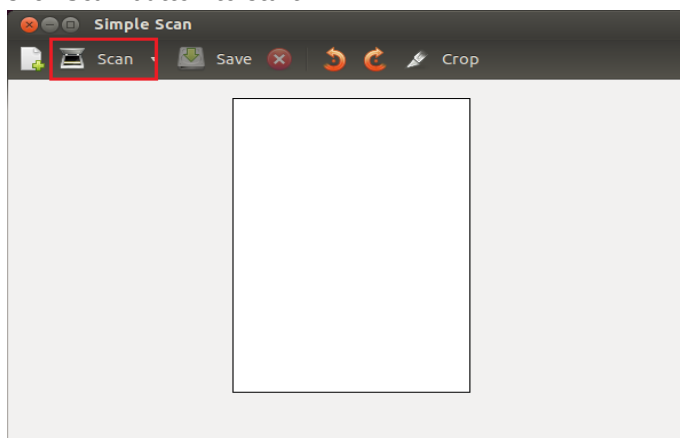
1. Launch Simple Scan program(execute the command "simple-scan" in Terminal program).
2. Go to Document > Preferences menu.



3. Select the scanner to use and set each scan option to apply.



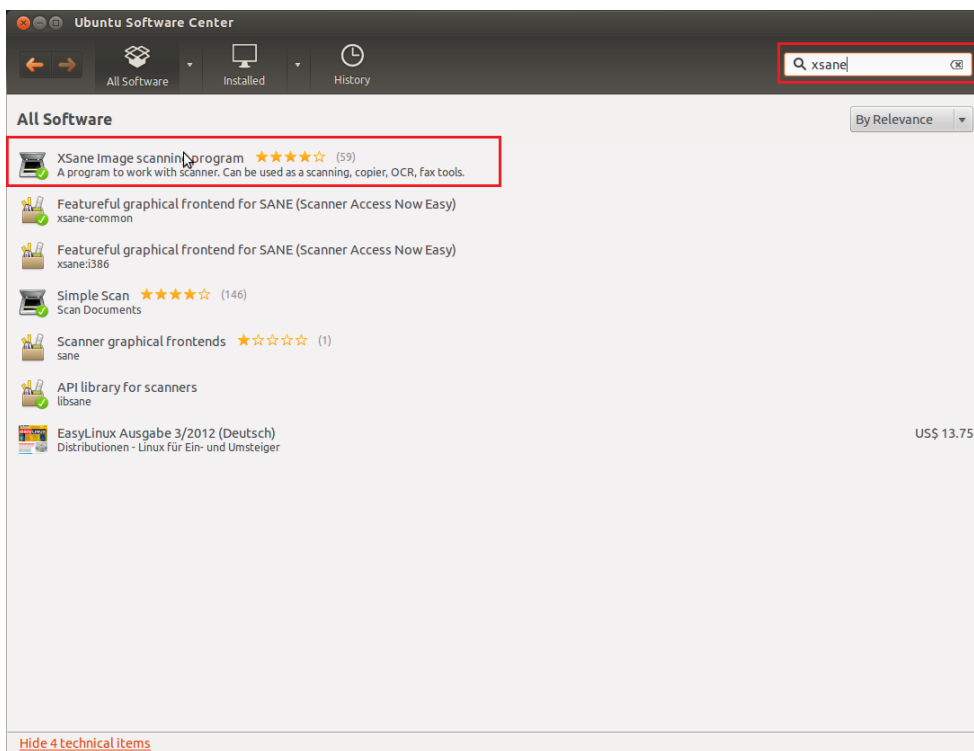
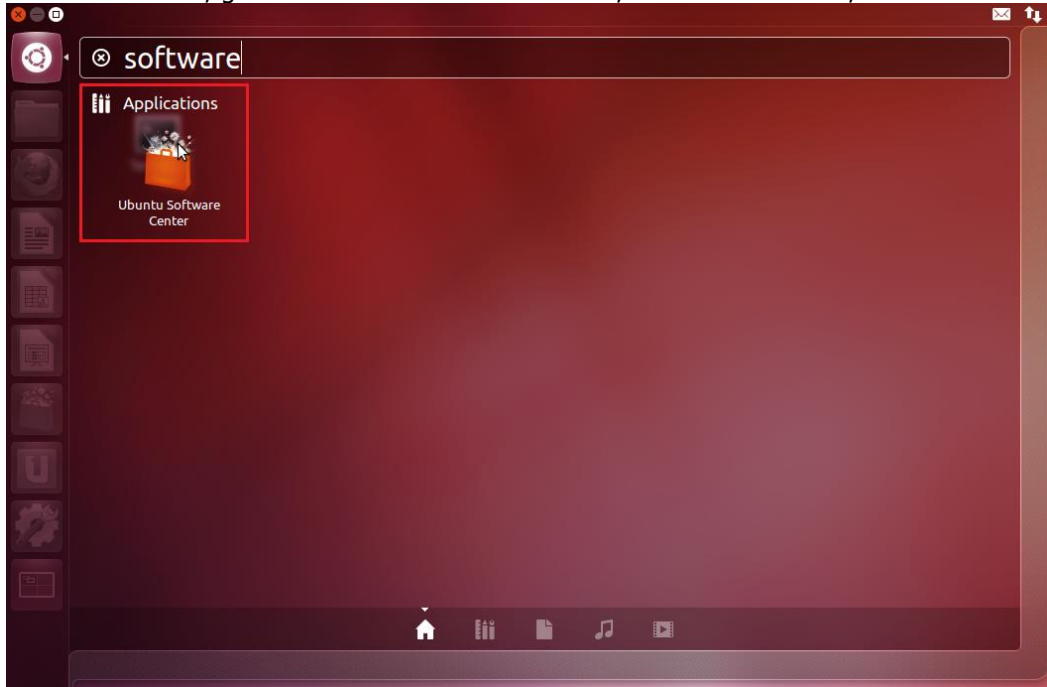
4. Click Scan button to start.



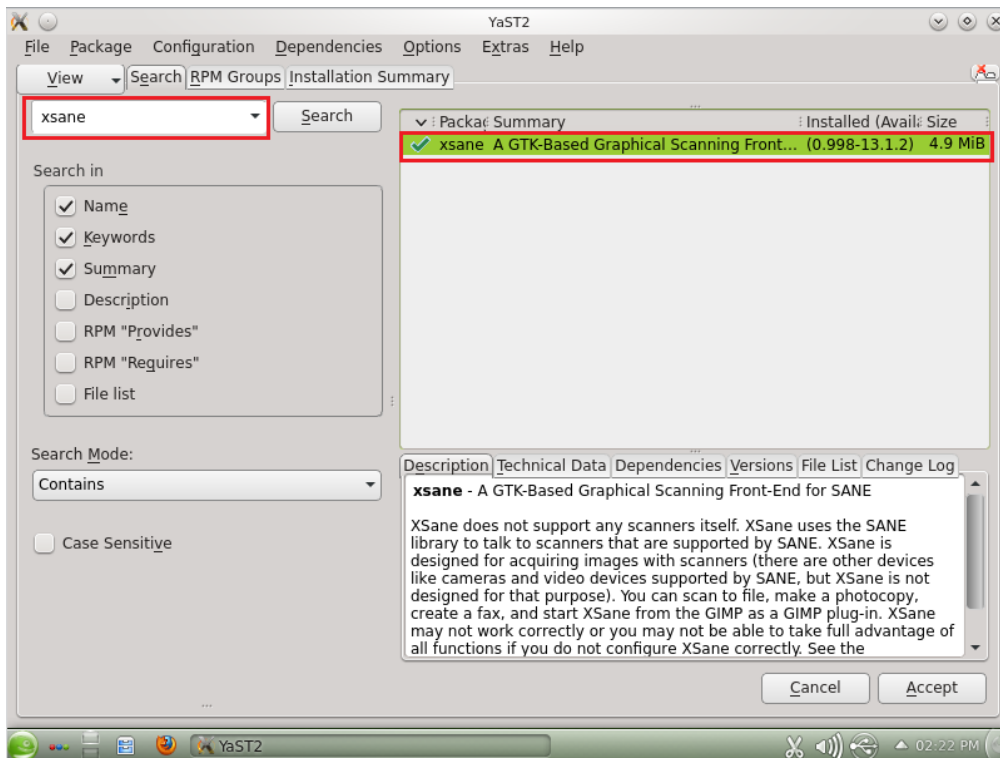
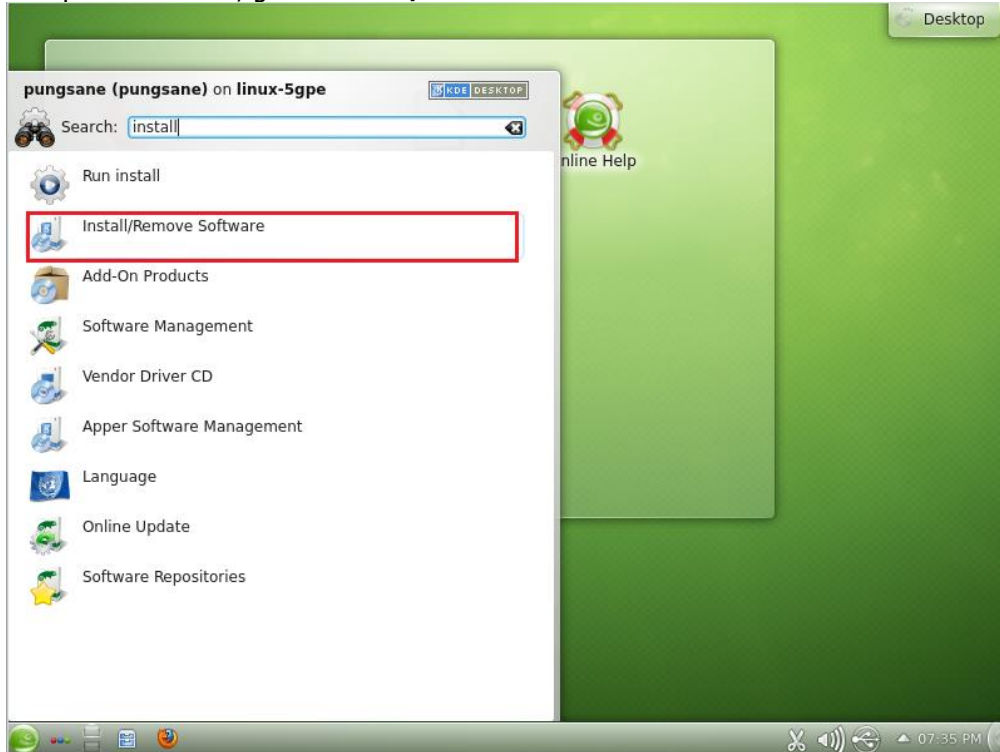
How to Install Xsane Program.

NOTE : To search/install Xsane program, internet should be available and network server's firewall should be turned off.

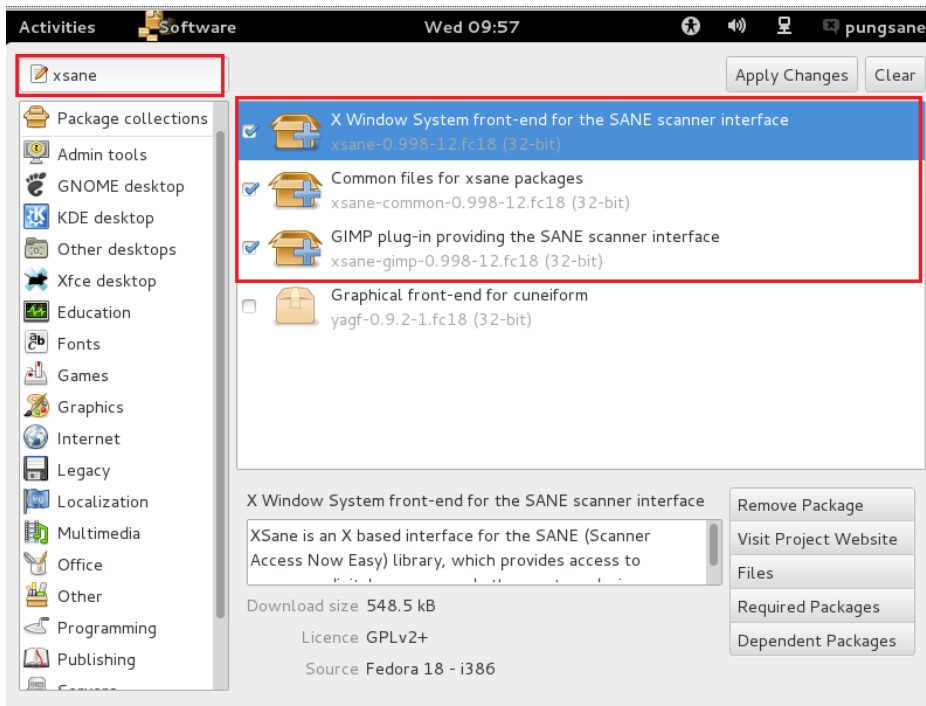
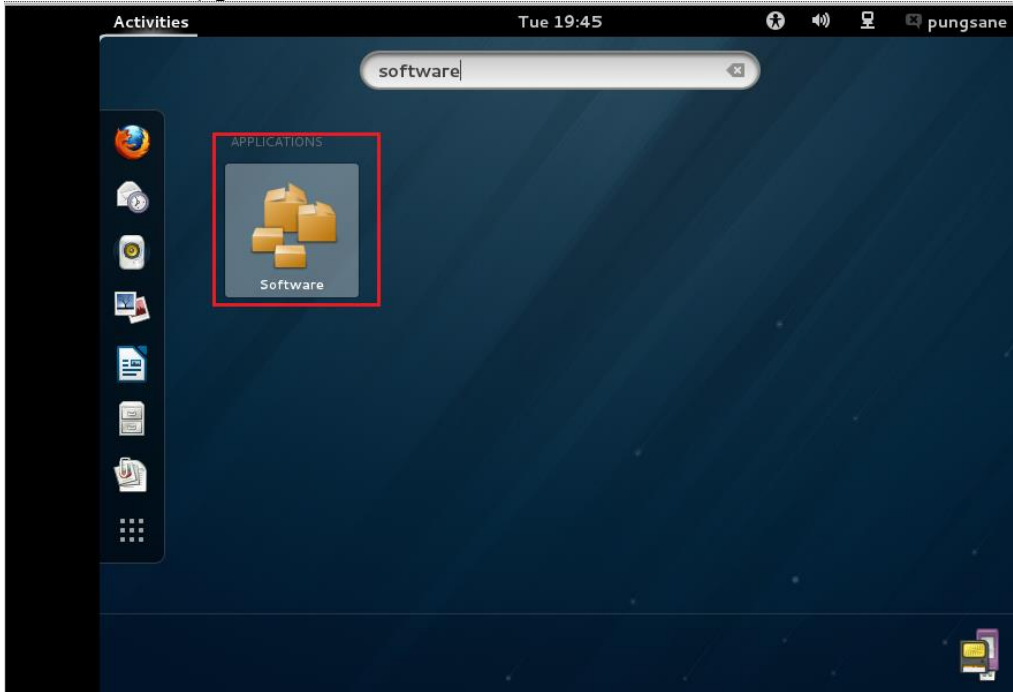
1. For Ubuntu users, go to **Ubuntu Software Center**, and search Xsane.,



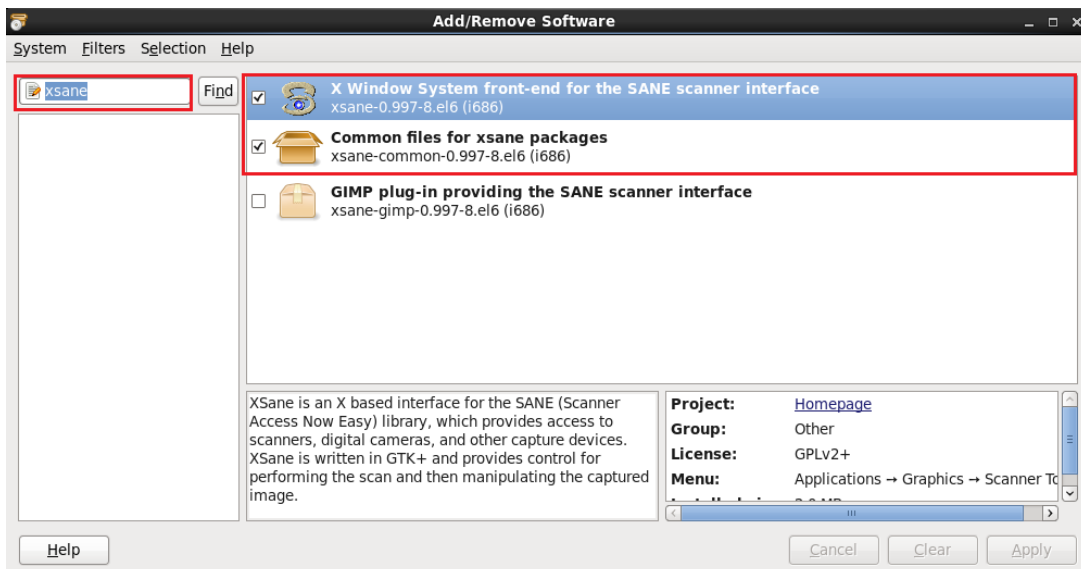
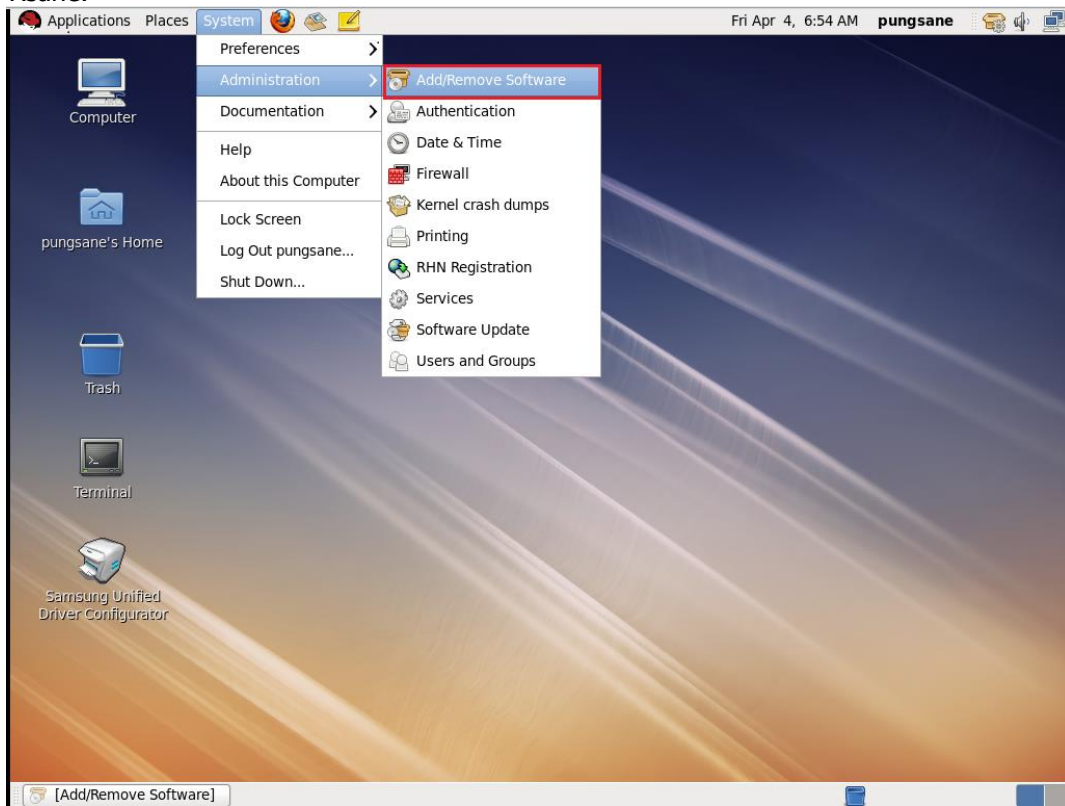
2. For openSUSE users, go to **Install/Remove Software** and search Xsane.



3. For Fedora users, go to **Software** and search Xsane.



4. For RedHat Enterprise Linux or Debian users, go to **Add/Remove Software** and search Xsane.

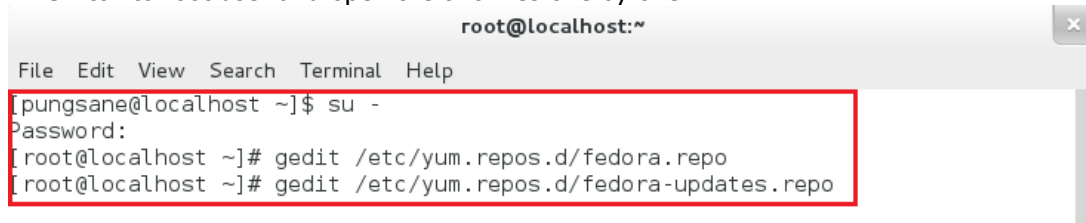


How to Install Xsane Program – Trouble Shootings

For Fedora Users

For some of Fedora distributions, you may fail to search Xsane program via Software. In such case, please refer to the following procedure to resolve this issue.

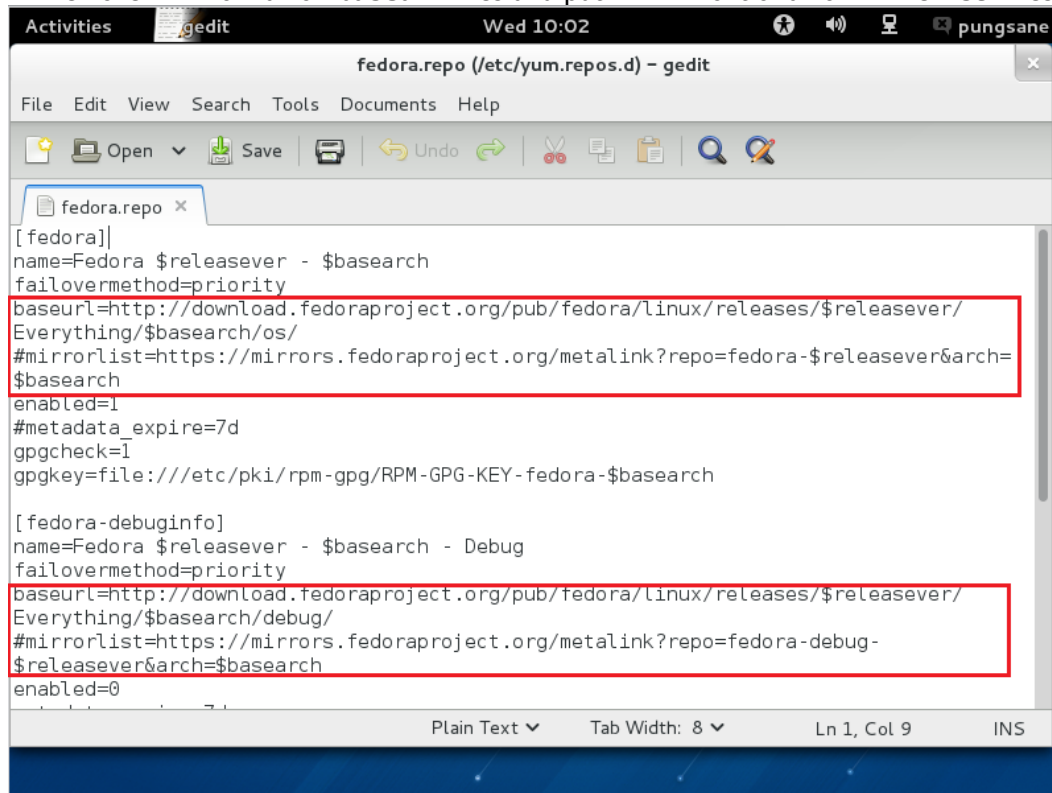
1. Switch to root user and open the two files one by one.



```

root@localhost:~
File Edit View Search Terminal Help
[pungsane@localhost ~]$ su -
Password:
[root@localhost ~]# gedit /etc/yum.repos.d/fedora.repo
[root@localhost ~]# gedit /etc/yum.repos.d/fedora-updates.repo
  
```

2. Remove “#” from all of **baseurl** lines and put “#” in front of all of **mirrorlist** lines.

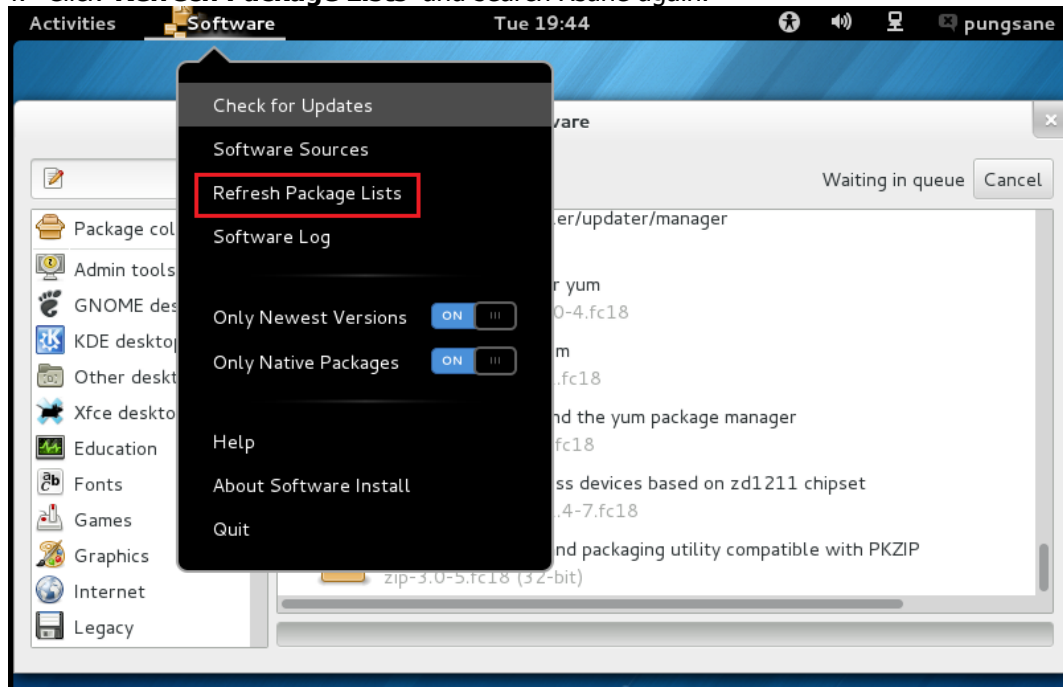


```

Activities gedit Wed 10:02 pungsane
fedora.repo (/etc/yum.repos.d) - gedit
File Edit View Search Tools Documents Help
Open Save Undo Redo
fedora.repo x
[ fedora ]
name=Fedora $releasever - $basearch
failovermethod=priority
baseurl=http://download.fedoraproject.org/pub/fedora/linux/releases/$releasever/
Everything/$basearch/os/
#mirrorlist=https://mirrors.fedoraproject.org/metalink?repo=fedora-$releasever&arch=
$basearch
enabled=1
#metadata_expire=7d
gpgcheck=1
gpgkey=file:///etc/pki/rpm-gpg/RPM-GPG-KEY-fedora-$basearch

[ fedora-debuginfo ]
name=Fedora $releasever - $basearch - Debug
failovermethod=priority
baseurl=http://download.fedoraproject.org/pub/fedora/linux/releases/$releasever/
Everything/$basearch/debug/
#mirrorlist=https://mirrors.fedoraproject.org/metalink?repo=fedora-debug-
$releasever&arch=$basearch
enabled=0
Plain Text Tab Width: 8 Ln 1, Col 9 INS
  
```

3. Save the files and launch **'Software'**
4. Click **'Refresh Package Lists'** and search Xsane again.



For Red Hat Enterprise Linux Users

For non-registered users for Red Hat Enterprise Linux, you may fail to search Xsane program via Install/Remove Software. In such case, please register your ID to official Red Hat home page to resolve this issue. For details, please contact Red Hat office.

SUPPORTED PRINTERS

The list below is based on the ULD Ver.1.00.35

Newer devices(models) will be added accordingly. Visit <http://www.samsung.com/printer> for the latest supported printers.

Device(Model)		Driver
Series	Model Number	ULD
C	140x/145x Series	O
	1810/1860 Series	O
	2620/2670/268x Series	O
	410/420/460/470/4820 Series	O
CLP-	300/310/320/350/360 Series	O
	410 Series	O
	600/610/620/660/670/680 Series	O
	770/775 Series	O
CLX-	216x Series	O
	3160/3170/3180/3300 Series	O
	4190 Series	O
	6200/6220/6240/6250/6260 Series	O
	8380/8385/8380X/8540 Series	O
	8640 8650 Series	O
	9250 9350/9252 9352/92x1 93x1 Series	O
	981x/982x Series	O
K	2200 Series	O
	401/4350 Series	O
	7600 Series	O
M	2020/2070/262x 282x/267x 287x/ 283x/288x Series	O
	332x 382x 402x/337x 387x 407x Series	O
	4370 5370/453x/458x Series	O
	5270 Series	O
MFP-	560/65x/750 Series	O
ML-	1520/1610/1630/1630W/1640/1660/1670/ 1710/1740/1860/1865W/191x 252x Series	O
	2010/2150/2160/2240/2245/2250/2510/ 2525W/2540/2550/2570/2580/2850/2853/ 2855/2950 Series	O
	3050/3300/331x/3470/3475/3560/371x/ 375x Series	O
	4050/4055/451x 501x/4550/4555 Series	O
	551x 651x Series	O
	8850 8950/8x00 Series	O
SCX-	3200/3400 Series	O
	4100/4200/4300/4500/4500W/4600/4623/ 4623FW/4650 4x21S/470x/472x/4725/ 483x 5x3x/4x16/4x20/4x21/4x24/4x25/ 4x26/4x28 Series	O
	5x30/5635/5835_5953/5835_5935X Series	O

	6545/6545X/6x20/6x22/6x45/6x55/ 6x55X/681x Series	0
	8030 8040 Series	0
	8123 8128/8230 8240/881x/882x Series	0
SF-	760 Series	0
X	401/4300 Series	0